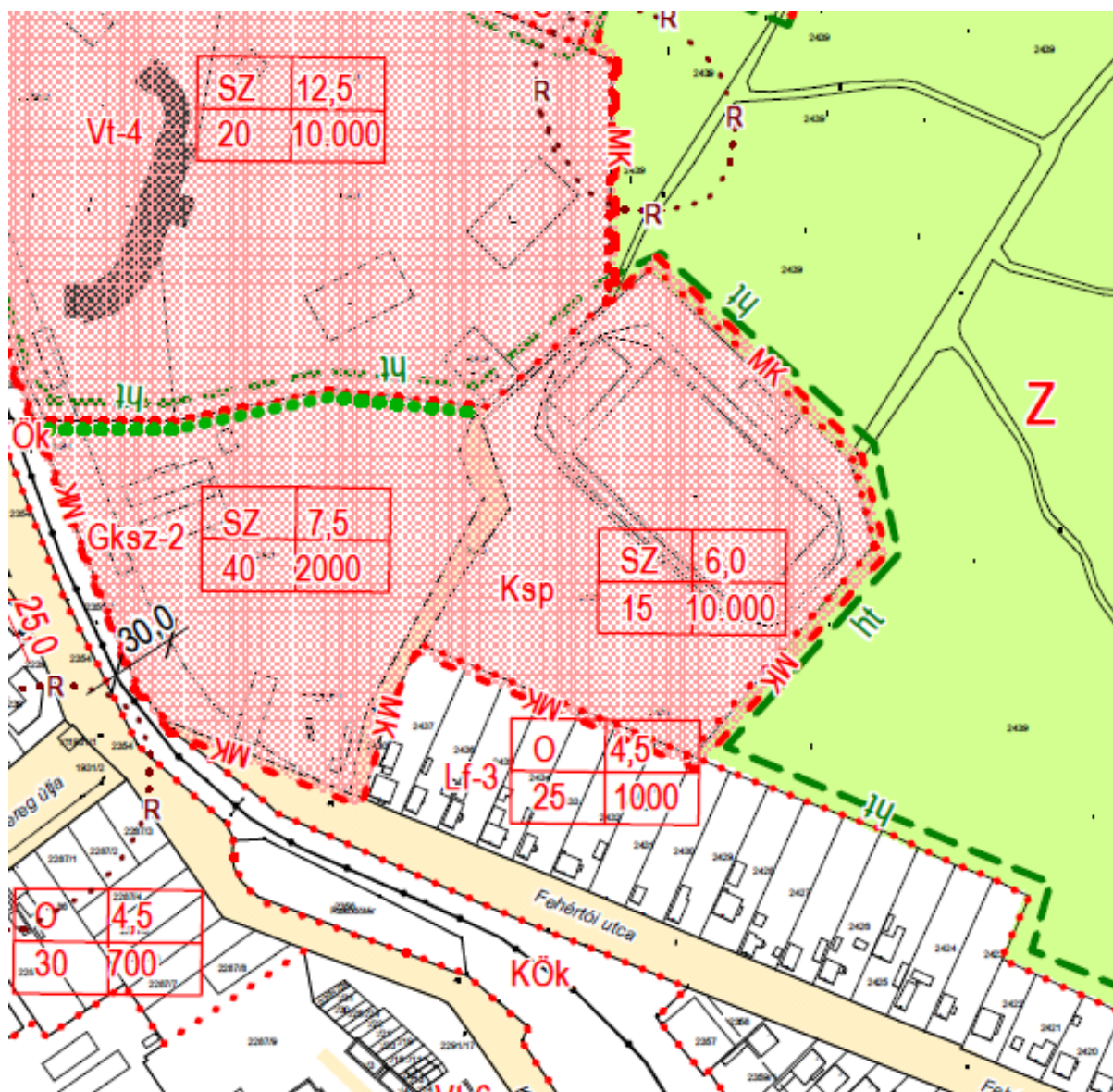


1. Fehértói u., Lombik pálya (2438 hrsz)



This detailed technical drawing illustrates the proposed development of a residential plot (051/22). It shows the layout of buildings, setbacks from boundaries, and landscaping features. Key elements include:

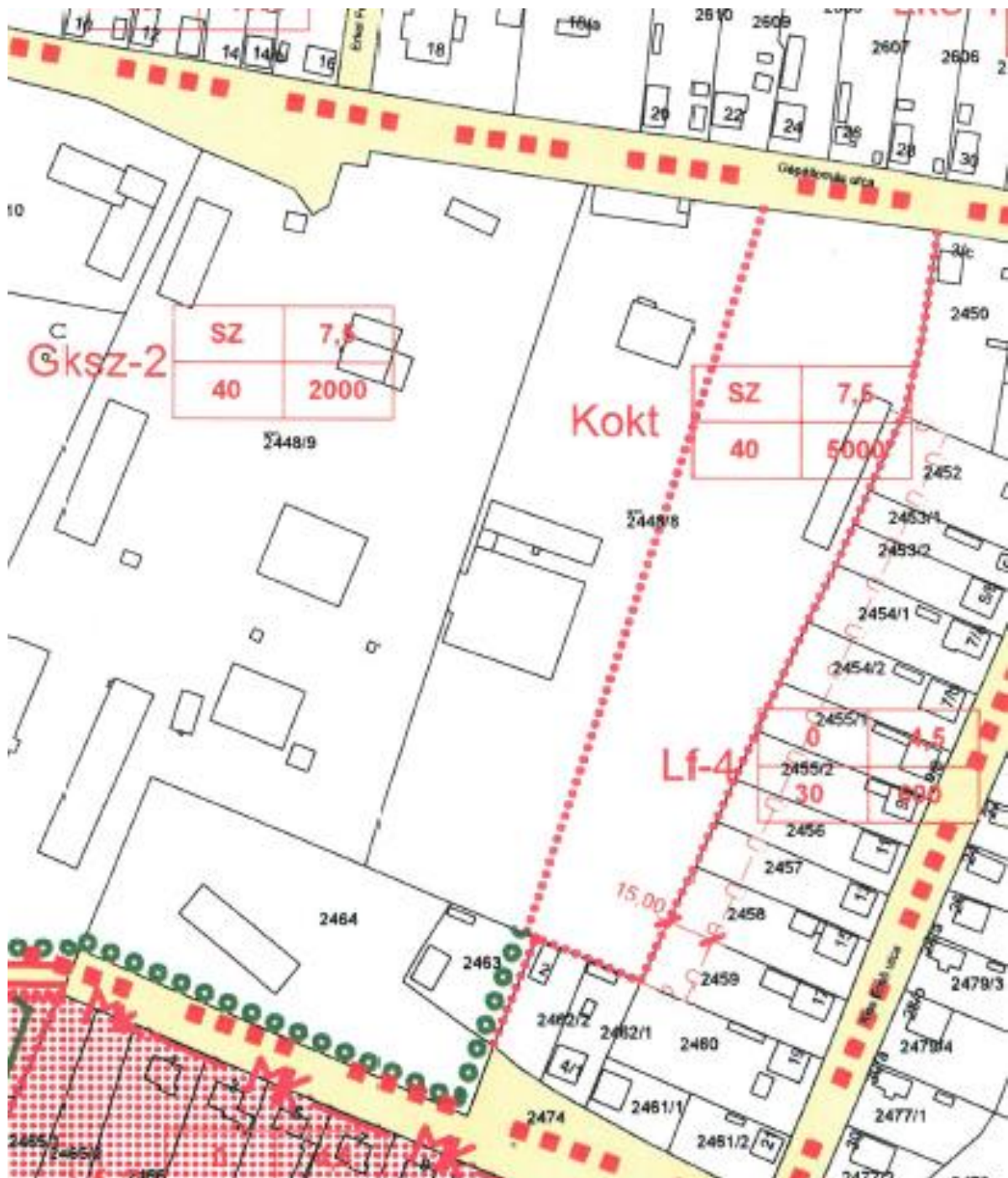
- Plot Identification:** The main plot is labeled 051/22.
- Setbacks and Dimensions:** Various setback distances are indicated, such as 30.00m, 15.00m, 40.00m, and 25.00m.
- Area Calculations:** Several tables provide calculated areas for different parts of the site:

SZ	6,0
40	1000

Gksz-4 SZ	6,0
30	2000

Lke-1 O	4,5
---------	-----
- Landscaping and Fencing:** Trees are marked with "Kök" and fences with "Gksz".
- Adjacent Plots:** Surrounding plots are identified by numbers like 051/5, 051/4, 051/15, 051/24, 051/28, 051/26, 051/7, 053/1, 053/2, 053/3, 2671, 2672, 2674, 2675, 2676, 2677, 2678, 2679/1, 2680, 2679/2, 2681/2, 2624/1, 2624/2, 2625, 2627/1, 2627/2, 2628, and 2629.

3. Gépállomás u. 7. sz. (2448/13 hrsz)



[illegible]

5. Vas Gereben u. – Gombás András u. sarkán lévő ingatlan (2252 hrsz)

